

SOLUM



The New
Generation
of ESL

→ Newton Pro	04–07
→ Newton CORE	08–11
→ Newton X	12–13
→ Newton LITE	14–15
→ Newton DUAL	16–17
→ Newton Link	18–19
→ Newton PLAY	20–21
→ Newton GATEWAY	22–23
→ Aims	24–25
→ SOLUM Signage	26–27

Newton Pro

Retail Revolution
Redefined



Revamped Aesthetics
and Streamlined Design



4-Color
E-paper Display



10x Faster
Update Speed



Enhanced Durability with
IP68 Waterproof Rating



Interactive
Button



Customizable
Design



Easy locking and
battery replacement



NFC
Capability



1.6 INCH (V)



1.6 INCH (H)



2.2 INCH



2.6 INCH



2.7 INCH



2.9 INCH

MODEL	DIMENSION (MM)	ACTIVE AREA (MM)	RESOLUTION (PIXEL)	PIXEL DENSITY	PIXEL COLORS
1.6" (V)	36.7 X 44.9 X 10.45	27.0 X 27.0	200 X 200	188 DPI	BWRY
1.6" (H)	44.9 X 36.7 X 10.45	27.0 X 27.0	200 X 200	188 DPI	BWRY
2.2"	67.0 X 37.4 X 10.45	48.1 X 26.0	296 X 160	156 DPI	BWRY
2.6"	79.2 X 42.5 X 10.45	60.0 X 30.7	360 X 184	152 DPI	BWRY
2.7"	76.0 X 49.5 X 10.5	57.3 X 38.2	300 X 200	133 DPI	BWRY
2.9"	85.9 X 41.3 X 10.45	67.6 X 29.6	384 X 168	144 DPI	BWRY

Newton Pro



3.5 INCH



4.2 INCH



4.3 INCH



5.8 INCH



6.1 INCH

MODEL	DIMENSION (MM)	ACTIVE AREA (MM)	RESOLUTION (PIXEL)	PIXEL DENSITY	PIXEL COLORS
3.5"	100.2 X 49.6 X 10.45	81.0 X 38.0	384 X 180	120 DPI	BWRY
4.2"	98.1 X 83.7 X 12.45	84.8 X 63.6	400 X 300	120 DPI	BWRY
4.3"	130.2 X 42.3 X 13.0	105.4 X 30.7	522 X 152	125 DPI	BWRY
5.8"	164.0 X 66.8 X 14.3	139.0 X 47.7	792 X 272	144 DPI	BWRY
6.1"	133.20 X 109.96 X 14.90	118.78 X 88.22	648 X 480	138 DPI	BWRY



7.5 INCH



9.7 INCH



11.6 INCH

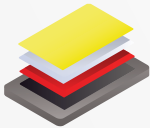


12.2 INCH

MODEL	DIMENSION (MM)	ACTIVE AREA (MM)	RESOLUTION (PIXEL)	PIXEL DENSITY	PIXEL COLORS
7.5"	125.0 X 182.9 X 14.85	97.9 X 163.2	480 X 800	126 DPI	BWRY
9.7"	170.2 X 223.6 X 14.85	141.1 X 201.6	672 X 960	121 DPI	BWRY
11.6"	192.0 X 269.1 X 15.35	163.0 X 244.5	640 X 960	100 DPI	BWRY
12.2"	216.2 X 260.0 X 15.35	190.1 X 237.6	768 X 960	103DPI	BWRY

Newton CORE

Your Core Advantage
for Success



4-color
E-paper Display



7-Color LED



Up to 7 Usable
Pages



10x Update
Speed



10 Year
Battery Life



Reflection-Resistant
Design



1.6 INCH



2.2 INCH



2.6 INCH



2.7 INCH



2.9 INCH



3.5 INCH

MODEL	DIMENSION (MM)	ACTIVE AREA (MM)	RESOLUTION (PIXEL)	PIXEL DENSITY	PIXEL COLORS
1.6"	36.95 X 46.63 X 11.62	27.0 X 27.0	200 X 200	188 DPI	BWRY
2.2"	66.95 X 36.95 X 11.62	48.1 X 26.0	296 X 160	156 DPI	BWRY
2.6"	78.12 X 42.79 X 11.62	60.1 X 30.7	360 X 184	152 DPI	BWRY
2.7"	75.64 X 49.51 X 11.62	57.29 X 38.19	300 X 200	133 DPI	BWRY
2.9"	85.67 X 42.79 X 11.62	67.6 X 29.6	384 X 168	144 DPI	BWRY
3.5"	99.73 X 49.35 X 12.80	81.0 X 37.9	384 X 180	120 DPI	BWRY

Newton CORE



4.2 INCH



4.3 INCH



5.8 INCH



6.1 INCH

MODEL	DIMENSION (MM)	ACTIVE AREA (MM)	RESOLUTION (PIXEL)	PIXEL DENSITY	PIXEL COLORS
4.2"	97.13 X 82.18 X 13.55	84.8 X 63.6	400 X 300	120 DPI	BWRY
4.3"	128.73 X 41.90 X 12.80	105.4 X 30.7	522 X 152	125 DPI	BWRY
5.8"	166.16 X 65.67 X 13.26	139.00 X 47.74	792 X 272	144 DPI	BWRY
6.1"	133.20 X 109.96 X 14.90	118.78 X 88.22	648 X 480	138 DPI	BWRY



7.5 INCH



9.7 INCH



11.6 INCH



12.2 INCH

MODEL	DIMENSION (MM)	ACTIVE AREA (MM)	RESOLUTION (PIXEL)	PIXEL DENSITY	PIXEL COLORS
7.5"	124.10 X 185.50 X 14.85	97.9 X 163.2	528 X 880	136 DPI	BWRY
9.7"	168.05 X 224.07 X 14.81	141.12 X 201.6	672 X 960	121 DPI	BWRY
11.6"	190.31 X 267.70 X 14.85	163.0 X 244.5	640 X 960	100 DPI	BWRY
12.2"	215.95 X 259.82 X 14.85	190.08 X 237.6	768 X 960	102 DPI	BWRY



Ultra-small size range



10x Updated Speed



7-Color LED



NFC Capability



5-7 Year
Battery Life



Location-Based Services
(LBS) Enabled



Unique Shelf Security
Mechanism



Collision-free
communication



Lightweight and Discreet
Design

Technical Specifications

	1.0 INCH	1.3 INCH	1.3 INCH PEGHOOK	2.2 INCH
DIMENSION (MM)	47.79 X 18.00 X 8.80	28.8 X 64.45 X 5.95	28.8 X 71.3 X 5.95	67.6 X 37.3 X 6.95
ACTIVE DISPLAY AREA (MM)	22.26 X 10.65	19.44X 27.0	19.44 X 27.0	48.1 X 26.0
RESOLUTION (PIXEL)	184 X 88	144 X 200	144 X 200	296 X 160
PIXEL DENSITY	210 DPI	188 DPI	188 DPI	156 DPI
DISPLAY TECHNOLOGY	FULL GRAPHIC E-INK DISPLAY			
PIXEL COLORS	BWR			
VIEWING ANGLE	NEARLY 180°			
USABLE PAGES	3 PAGES	7 PAGES	7 PAGES	7 PAGES



Newton LITE

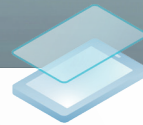
New Level
of Profitability



10x Updated Speed



7-Color LED



Protection Cover



NFC Capability



Easy Battery
Replacement



Splash and dustproof



Slim Sticker Bezel



Unique Shelf Security
Mechanism



Location-based System
(LBS) Enabled

Technical Specifications

	1.6 INCH	2.2 INCH	2.6 INCH	2.9 INCH
DIMENSION (MM)	37.12 × 46.81 × 14.00	71.22 × 37.21 × 14.00	80.27 × 43.03 × 14.00	87.48 × 43.03 × 14.00
ACTIVE DISPLAY AREA (MM)	26.8 X 26.8	48.35 × 23.50	59.85 × 30.49	67.38 × 29.37
RESOLUTION (PIXEL)	200 X 200	250 X 122	360 X 184	384 X 168
PIXEL DENSITY	188 DPI	130 DPI	152 DPI	144 DPI
DISPLAY TECHNOLOGY	FULL GRAPHIC E-INK DISPLAY			
BEZEL COLOR	WHITE / BLACK / CUSTOMIZABLE COLORS (OPTIONAL)			
PIXEL COLORS	BW / BWR / BWY			
VIEWING ANGLE	NEARLY 180°			
USABLE PAGES	UP TO 7 PAGES * OPTIONAL NFC REMOTE CONTROLLER IS REQUIRED			

* This specification may varies depending on the installation environment and user scenario.



Newton DUAL

Two Screens,
Infinite Possibilities.



Versatile Sizes
and Colors



Powered by
Newton Protocol



Interactive Programmable
Buttons



Extended
Battery Life



Blinking LED
Technology



Technical Specifications

	8.2 INCH	11.6 INCH
DIMENSION (MM)	207.8 X 139.1 X 13.5	268.5 X 191.2 X 13.5
ACTIVE DISPLAY AREA (MM)	180.22 X 101.38	244.5 X 163.0
RESOLUTION (PIXEL)	1024 X 576	640 X 960
PIXEL DENSITY	144 DPI	100 DPI
DISPLAY TECHNOLOGY	FULL GRAPHIC E-INK DISPLAY	
BEZEL COLOR	WHITE / BLACK / CUSTOMIZABLE COLORS (OPTIONAL)	
PIXEL COLORS	BWRY (BLACK, WHITE, RED, YELLOW)	BWR (BLACK, WHITE, RED)
VIEWING ANGLE	NEARLY 180°	



Newton Link

Easy to use for
Small businesses

Achieve



Faster deployment
compared to
traditional ESL
systems.



Flexible application
across small
business
environments.



Contactless
information sharing
and label interaction
via Bluetooth
connectivity,
ideal for today's
pandemic situation.



Clearer and more
precise display
compared to paper-
based signage and
labels.



Bluetooth
Low-Energy



E-paper
Display



7-Color LED



Same slim profile
design as Newton



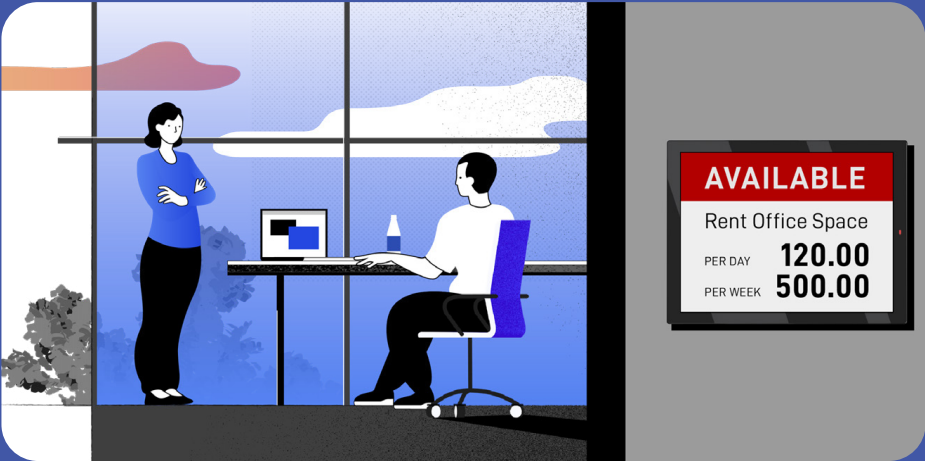
5-year battery life



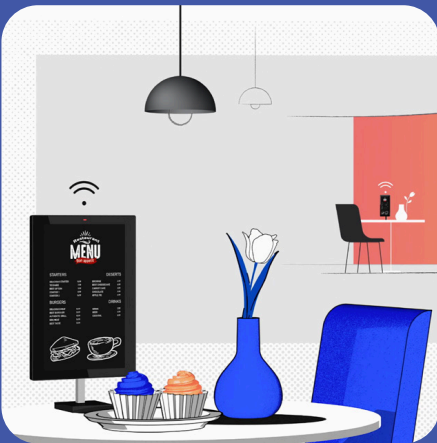
Available in
10 sizes

Use Cases

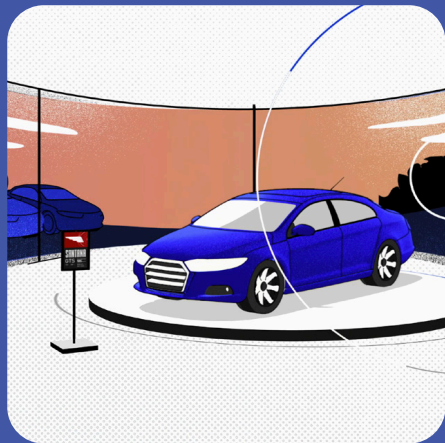
With Newton Link's tons of use cases, it can easily adapt to any business environment. From co-working spaces to restaurants, Newton Link's flexibility is limitless.



Digital Schedule Signage in Shared Offices



Digitized Menu Card
for Cafe and Restaurants



Promotional Signage
at Car Dealerships

Newton PLAY

Unveil Possibilities
Beyond Imagination



Newton Play brings together button-driven magic and vibrant visual displays to create an unparalleled shopping experience that will leave you in awe.

Features

Interactive Button Functionality

Elevate engagement with easy interaction. Newton Play's buttons let customers access information, promotions, and content instantly, turning shopping into an immersive experience.

Vibrant Monitor Display

Capture attention with vibrant visuals. Newton Play's high-res monitor brings brand stories and promotions to life, making your store a captivating experience.

Back Office Integration

Stay consistent effortlessly. Newton Play syncs seamlessly with your systems, ensuring accurate, real-time information on the monitor for a streamlined experience.

Configurability

Tailor to your brand's essence. Customize buttons and content to create unique interactions that resonate, making every touch unforgettable.

Real-Time Update

Stay current effortlessly. Newton Play keeps displayed info accurate and up-to-date, empowering customers with the latest insights for confident decisions.

Comprehensive Solution

Simplify with one powerful solution. Newton Play combines ESL tech with buttons, providing a complete toolset to elevate your retail environment.



Newton GATEWAY

Experience Faster
Operations



Technical Specifications

	Newton Gateway	Newton USB Gateway
POWER SOURCE	POE (IEEE802.3AF) DC 10W(5-12V)	2.5W(5V 0.5A)
OPERATING TEMP	0°C TO 40°C	0°C TO 40°C
CAPACITY	50,000 LABELS	50,000 LABELS
COMMUNICATION RANGE(RADIUS)	UP TO 30M	UP TO 25M
RF COMMUNICATION	2.4GHZ ISM BAND	
	2401MHZ~2480MHZ(80CH)	2401~2480MHZ (80CH)
FLASH	4GB	4GB
RAM	2GB	2GB

Benefits



Lightning-fast data transfer



60 RF Channels



50,000 labels capacity



Easy deployment and integration





Real-Time Monitoring

React and adjust your resources and processes quickly when necessary.



Security

Aims is equipped with multiple authentications and encryption protocols to ensure maximum data security between your labels, gateways, and servers.



Scalability

The modular architecture of Aims makes it possible to integrate with your legacy systems and other critical IT solutions through REST API.

Select from three deployment options

Aims Site

A solid and reliable option for businesses that require independent ESL operations.

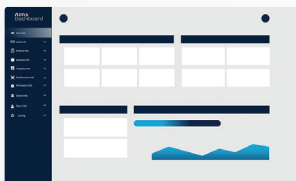
Aims Cloud

A flexible and robust solution that can be deployed in your own central data center, a private cloud, or public cloud services such as Microsoft Azure, Amazon Web Services, or Google Cloud.

Aims SaaS

Hosted on SOLUM's Cloud Platform using Microsoft Azure service, Aims SaaS allows you to deploy Aims more quickly at a lower cost.

Components of Aims



Aims Dashboard

Central monitoring dashboard displays real-time information about the labels, gateways, server, and network.



Aims Layout Designer

An easy-to-use tool that allows you to design the layout of your ESLs.



Aims Manager

A web-based or mobile-based app that allows your staff to control and manage your ESLs directly from the shelves.



System Core and Portal

The back-end system that facilitates communication between all the hardware, software, and servers connected to your business.

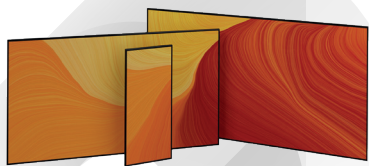
SOLUM Signage

Elevate Your Display
Communication



Bar Display

MODEL	ACTIVE DISPLAY AREA (MM)	RESOLUTION (PIXEL)	TOUCH SCREEN
NEWTON TOUCH			
23"	585.56(H) X 48.18(V)	1920 X 158	YES
29"	698.4(H) X 196.43(V)	1920 X 540	YES
25" QHD	246.888(H) X 585.216(V)	1080 X 2560	NO
35" BAR	878.4(H) X 48.19(V)	2880 X 158	NO
37" BAR	899.712(H) X 253.044(V)	1920 X 540	NO
47.1"	1,196.16(H) X 49.84(V)	3840 X 160	NO



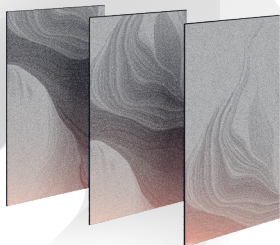
Standard Display

MODEL	ACTIVE DISPLAY AREA	RESOLUTION (PIXEL)
50" UHD	1095.84(H) X 616.41(V) MM	3840 X 2160 (UHD)
32" FHD	698.4(H) X 392.85(V) MM	1920 X 1080
43" UHD	941.184(H) X 529.416(V) MM	3840 X 2160
55" UHD	1,219.6(H) X 691.9(V) MM	3840 X 2160
65" UHD	1,438.48(H) X 815.02(V) MM	3840 X 2160



Dual Display

MODEL	ACTIVE DISPLAY AREA	RESOLUTION (PIXEL)
49"	604(H) X 1,074(V)	1080 X 1920



EPD Display

MODEL	ACTIVE DISPLAY AREA	RESOLUTION (PIXEL)
31.5" EPD DISPLAY	696.32 X 391.68 MM	2560 X 1440

www.solumesl.com

For more inquiries, please contact:



SOLUM Europe GmbH

Frankfurter Str. 10-14,
65760 Eschborn,
GERMANY

Stefan Völkel

Vice President of Sales
+49 (0) 152 5231 1527
stefan.voelkel@solumesl.com

Jeongkuk Shin

Head of Sales EMEA
+49 (0) 162 295 5071
jkshin@solumesl.com